



The Roebuck

The Roebuck is an excellent alternative to the larger Grange design. Featuring a similar front facade, the Roebuck boasts a fantastic open-plan living area that lets you take in the views whether you're in the kitchen, dining or living room. A secondary living space off the main entrance leads to the spacious master bedroom with a walk-in robe and ensuite. At the opposite end of the house are three minor bedrooms, each with built-in robes and the family bathroom. Functionality is not missed in this home, with ample storage and a convenient third shower in the laundry/mudroom.



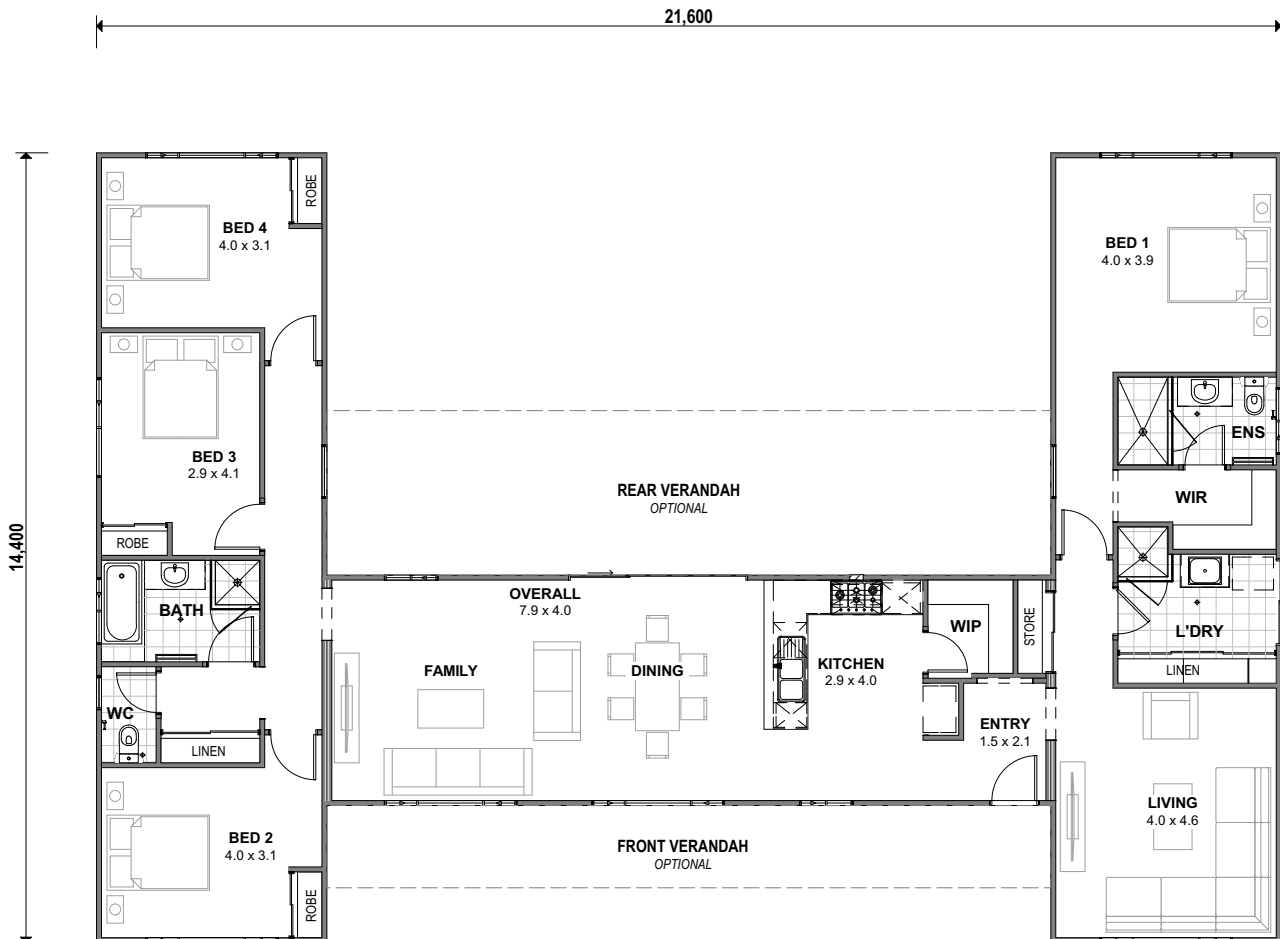


The Roebuck

x4 x2 x1

Total 176sqm

Overall House Dimensions
21.6m wide by 14.4m long



WA'S TRUE COUNTRY BUILDER

TRUE SERVICE

Our team offers dedicated support throughout the building process to make your life easier.

TRUE QUALITY

We provide an industry-best 10-year structural guarantee – a sure sign that your home will stand the test of time.

TRUE EXPERTISE

Whether you live in a cyclonic region or you have a heavy clay site, you can feel safe in knowing your home has been built for your area.

TRUE VALUE

We're transparent about what's included in the price and include required costs upfront to avoid unexpected surprises when you're underway

Head office 105 Kelvin Road, Maddington, WA 6109
P 9493 2998 **E** info@trhomes.com.au
W trhomes.com.au



TR Homes - Proudly part of the Murray River North Group

Illustrations and photographs in this brochure may depict fixtures, finishes and features not supplied by the builder. All furniture, furnishings and landscaping are not included. For detailed home pricing, please contact our new home consultants. Brands and model numbers are subject to change due to supplier availability and stock. In the event of a change, an equivalent model will be given. Murray River North Pty Ltd Builders Registration Number 8476 trading as TR Homes.