



The Grange

The Grange has a traditional farmhouse look and a large open-plan living area, creating a fantastic feel when you walk in the front door. The home theatre, games room and open-plan dining and living area, which open onto an optional alfresco verandah, provide ample space for the whole family to relax or entertain. The kitchen is a large, functional workspace with plenty of storage, including a large pantry. This home also boasts three bathrooms, a master bedroom with separate wardrobes, mudroom access, and a home office that could easily be a fifth bedroom. The Grange offers all the space, storage, style and sophistication you could wish for in a country home.



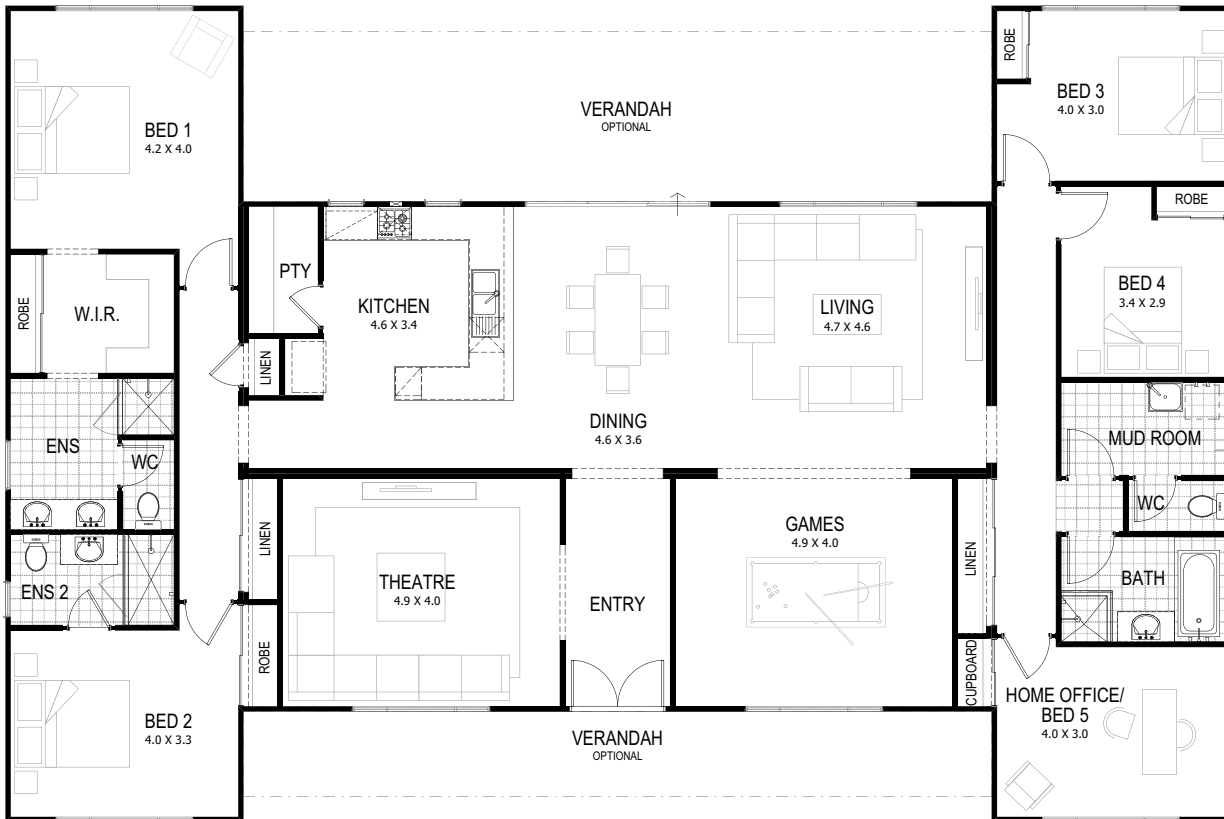


The Grange

x4 x3 x1 x1 x1

Total 240sqm

Overall House Dimensions
21.6m wide x 14.4m long



WA'S TRUE COUNTRY BUILDER

TRUE SERVICE

Our team offers dedicated support throughout the building process to make your life easier.

TRUE QUALITY

We provide an industry-best 10-year structural guarantee – a sure sign that your home will stand the test of time.

TRUE EXPERTISE

Whether you live in a cyclonic region or you have a heavy clay site, you can feel safe in knowing your home has been built for your area.

TRUE VALUE

We're transparent about what's included in the price and include required costs upfront to avoid unexpected surprises when you're underway

Head office 105 Kelvin Road, Maddington, WA 6109
P 9493 2998 **E** info@trhomes.com.au
W trhomes.com.au



TR Homes - Proudly part of the Murray River North Group