



# The Grove

**The Grove** is a thoughtfully designed smaller home, customisable with multiple elevations to make it truly yours. It's an entertainer's delight, offering a stunning open-plan living area and a private retreat for when it's time to retire for the evening. The front of the home showcases the gourmet kitchen, seamlessly integrated into the dining area and opening onto the optional alfresco, creating ample space for indoor and outdoor living and cool shade in the heat of summer.



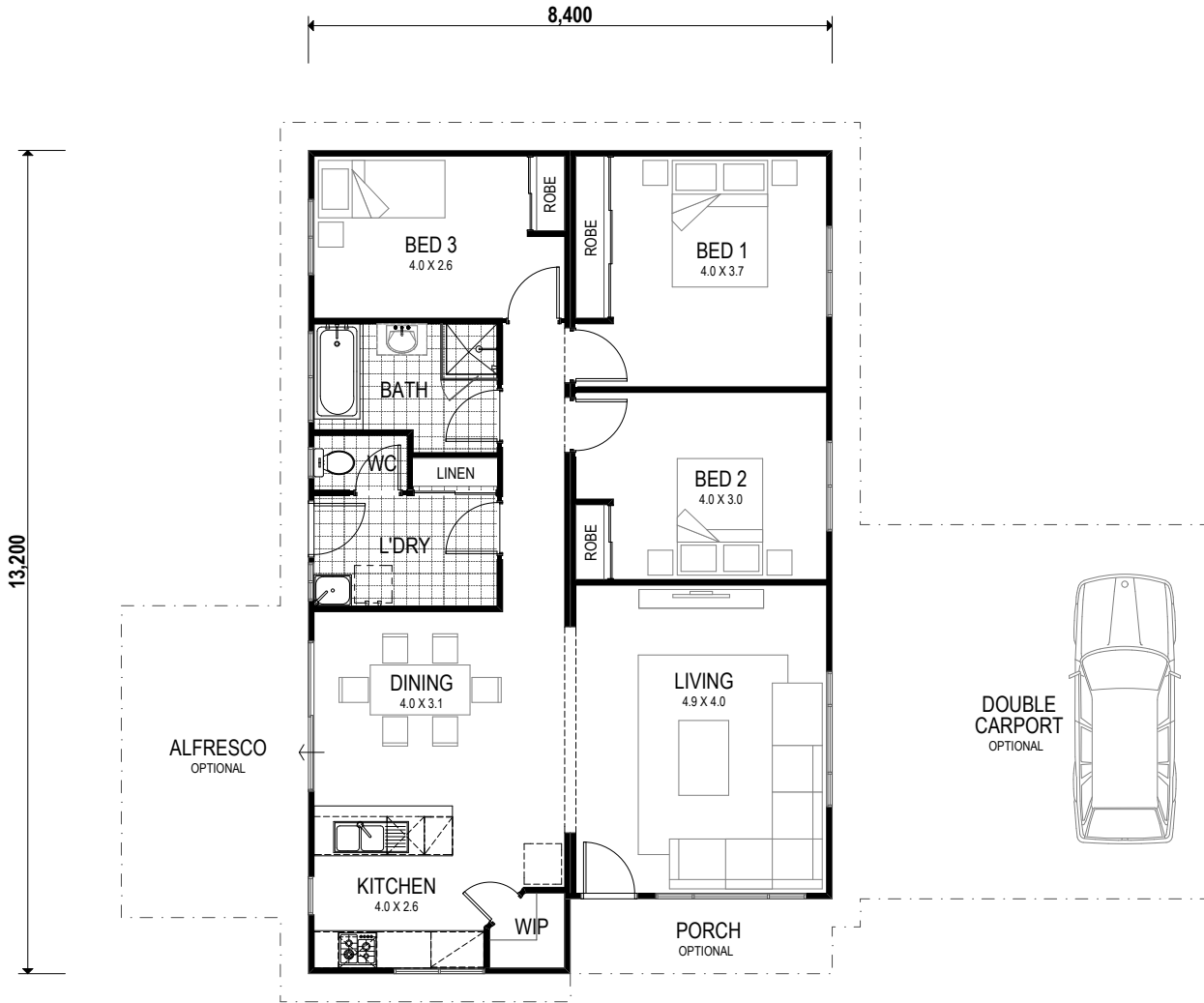


# The Grove

x3 x1 x1

Total 106sqm

**Overall House Dimensions**  
8.4m wide by 13.2m long



## WA'S TRUE COUNTRY BUILDER

### TRUE SERVICE

Our team offers dedicated support throughout the building process to make your life easier.

### TRUE QUALITY

We provide an industry-best 10-year structural guarantee – a sure sign that your home will stand the test of time.

### TRUE EXPERTISE

Whether you live in a cyclonic region or you have a heavy clay site, you can feel safe in knowing your home has been built for your area.

### TRUE VALUE

We're transparent about what's included in the price and include required costs upfront to avoid unexpected surprises when you're underway

**Head office** 105 Kelvin Road, Maddington, WA 6109  
**P** 9493 2998 **E** info@trhomes.com.au  
**W** trhomes.com.au



**TR Homes** - Proudly part of the Murray River North Group