



The Hamelin Bay

The Hamelin Bay's contemporary home design challenges the perception of what modular homes can be. As the name suggests, the Hamelin Bay has been designed with relaxed living in mind. This four-bedroom, two-bathroom home boasts high ceilings that contribute to the feeling of abundant space and light. The separate wings for parents and children come together in a free-flowing layout. The open-plan living, kitchen and dining area seamlessly transition onto an optional expansive outdoor living area, making it a great family entertainer.



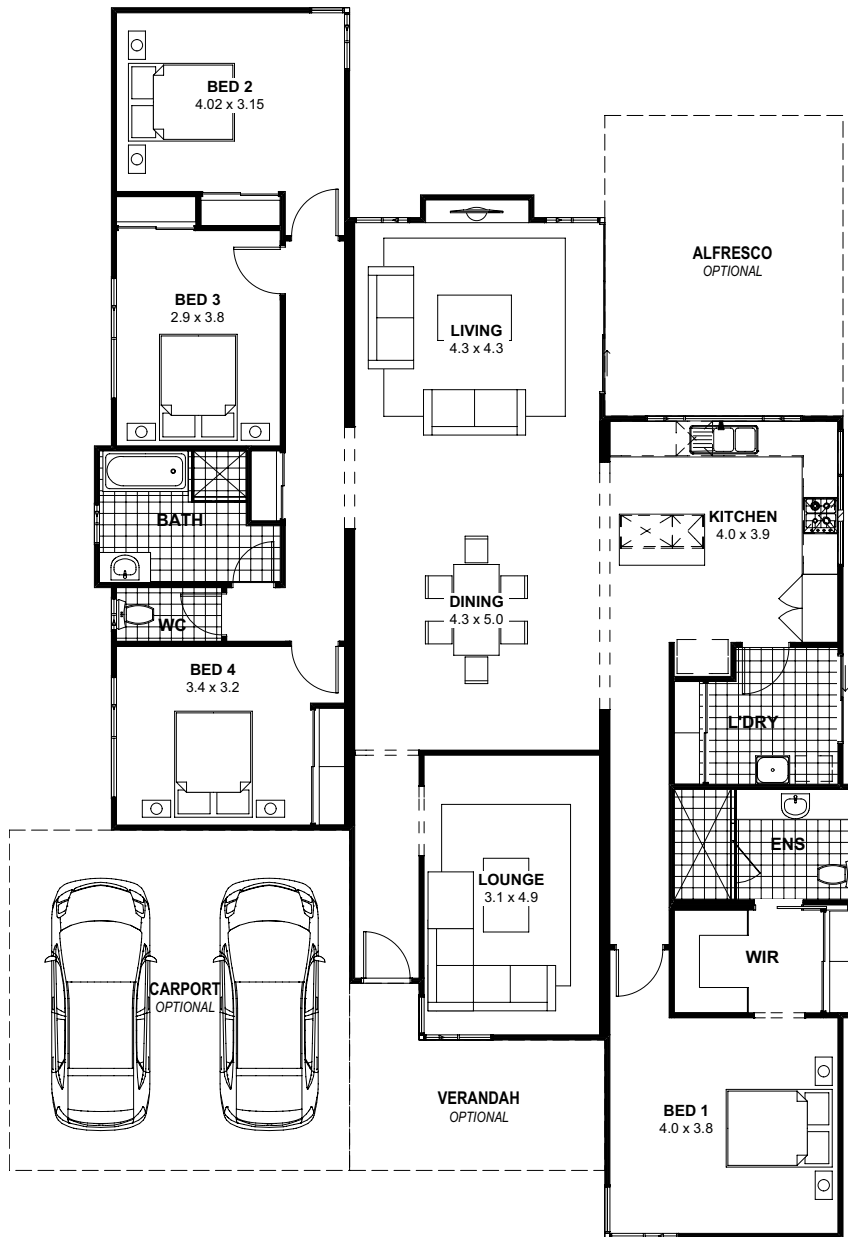


The Hamelin Bay

x4 x2 x1

Total 188sqm

Overall House Dimensions
13.5m wide x 21.7m long



WA'S **TRUE**
COUNTRY
BUILDER

TRUE
SERVICE

Our team offers dedicated support throughout the building process to make your life easier.

TRUE
QUALITY

We provide an industry-best 10-year structural guarantee – a sure sign that your home will stand the test of time.

TRUE
EXPERTISE

Whether you live in a cyclonic region or you have a heavy clay site, you can feel safe in knowing your home has been built for your area.

TRUE
VALUE

We're transparent about what's included in the price and include required costs upfront to avoid unexpected surprises when you're underway

Head office 105 Kelvin Road, Maddington, WA 6109
P 9493 2998 **E** info@trhomes.com.au
W trhomes.com.au

**MURRAY
RIVER NORTH
GROUP**

TR Homes - Proudly part of the
Murray River North Group

Illustrations and photographs in this brochure may depict fixtures, finishes and features not supplied by the builder. All furniture, furnishings and landscaping are not included. For detailed home pricing, please contact our new home consultants. Brands and model numbers are subject to change due to supplier availability and stock. In the event of a change, an equivalent model will be given. Murray River North Pty Ltd Builders Registration Number 8476 trading as TR Homes.