



# The Homestead

**The Homestead** is the best of both worlds. A spacious, four-bedroom home designed for ultimate comfort and country living. With its generous living areas, abundant storage and a flexible second living space, it provides effortless living all year round. Love watching the world go by? Choose the added charm of optional expansive verandahs to relax and unwind.



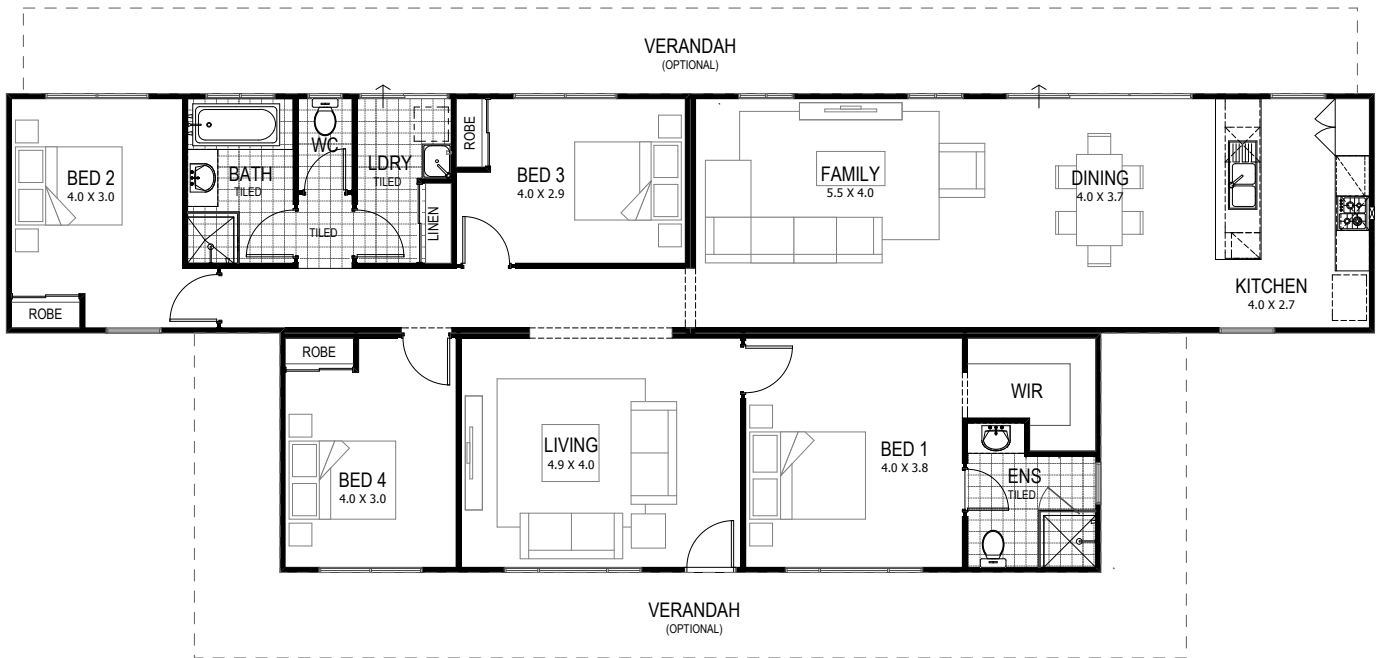


# The Homestead

x4 x2

Total 161sqm

**Overall House Dimensions**  
24m wide x 8.4m long



## WA'S TRUE COUNTRY BUILDER

### TRUE SERVICE

Our team offers dedicated support throughout the building process to make your life easier.

### TRUE QUALITY

We provide an industry-best 10-year structural guarantee – a sure sign that your home will stand the test of time.

### TRUE EXPERTISE

Whether you live in a cyclonic region or you have a heavy clay site, you can feel safe in knowing your home has been built for your area.

### TRUE VALUE

We're transparent about what's included in the price and include required costs upfront to avoid unexpected surprises when you're underway

**Head office** 105 Kelvin Road, Maddington, WA 6109  
**P** 9493 2998 **E** info@trhomes.com.au  
**W** trhomes.com.au



**TR Homes** - Proudly part of the Murray River North Group