



The Pilbara

The Pilbara is a spacious free-flowing, four-bedroom home designed for growing families. A private parent's retreat featuring an ensuite and walk-in robe offers a peaceful sanctuary away from the separate children's wing. The open-plan kitchen, living and dining area flow seamlessly onto the optional alfresco, creating an inviting family or entertainment hub. A study, theatre/games room, and handy storeroom complete this highly functional home. Space, privacy and versatility – The Pilbara has it all.



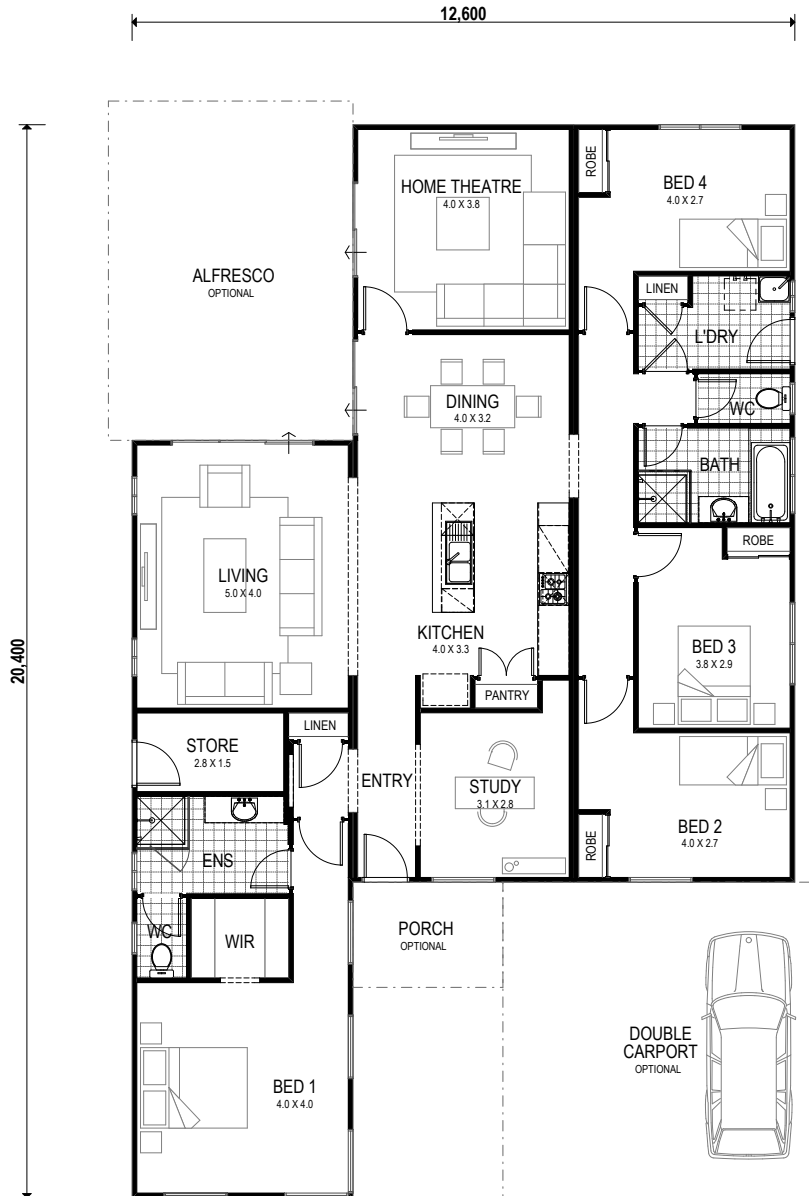


The Pilbara

x4 x2 x1

Total 181sqm

Overall House Dimensions
12.6m wide by 20.4m long



WA'S TRUE COUNTRY BUILDER

TRUE SERVICE

Our team offers dedicated support throughout the building process to make your life easier.

TRUE QUALITY

We provide an industry-best 10-year structural guarantee – a sure sign that your home will stand the test of time.

TRUE EXPERTISE

Whether you live in a cyclonic region or you have a heavy clay site, you can feel safe in knowing your home has been built for your area.

TRUE VALUE

We're transparent about what's included in the price and include required costs upfront to avoid unexpected surprises when you're underway

Head office 105 Kelvin Road, Maddington, WA 6109
P 9493 2998 **E** info@trhomes.com.au
W trhomes.com.au



TR Homes - Proudly part of the Murray River North Group